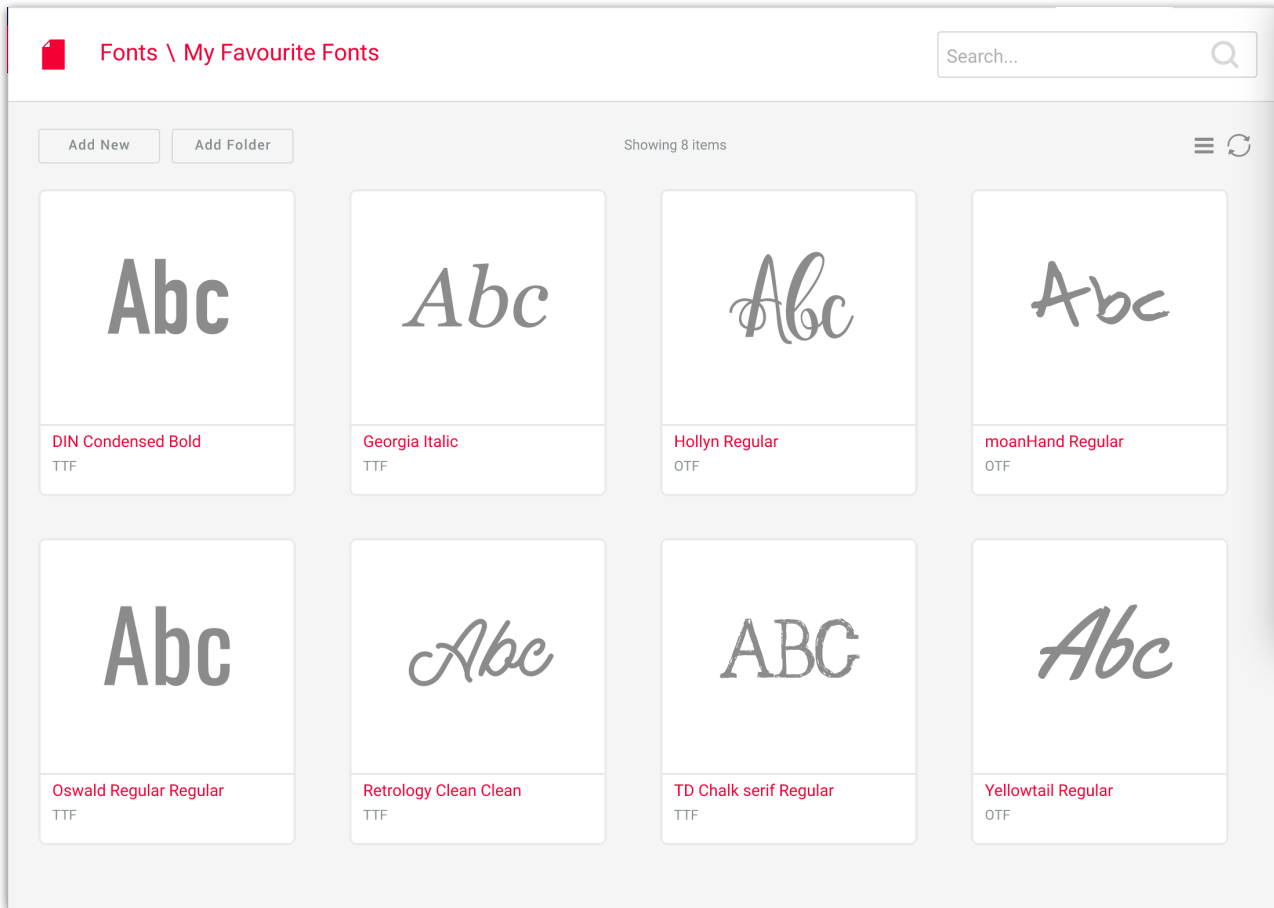


Fonts

Published on 08/28/2023

Just like documents, fonts are organized in Libraries and Folders. You can organize these in the same way as other resources. You can access your environment fonts via Resources > Documents > Fonts. You'll see an overview of the available fonts and for each font, you'll see a preview.


Keep in mind to check your font supplier for the right license. Supported font types are .OTF and TTF. Best results are generated with .otf fonts. They are consistent on PC / Mac / CHILI Publish



Double-clicking on a font will open the detail view, showing a bigger preview and all the info about the font-file.

[Back](#) Hollyn Regular

Copy Move Delete Download < 3 / 8 >



General ^

Name Hollyn Regular

Metadata:

FileSize 46.14 Kb

Info ^

Item ID

Enabling additional fonts in a document can be done via the panel "Fonts" in the "Text" tab.

Simply clicking the + sign will allow you to browse the font library in the backoffice to select the font you want to add to the document.

Fonts v

Arial Regular ✎

Hollyn Regular ✎

+×



© 2023 Lytho, Inc. All rights reserved. | [Privacy Policy](https://www.lytho.com/privacy-policy/)
Have a friend who could benefit from Lytho? [Refer them and get a \\$200 gift card!](https://www.lytho.com/share-the-lytho-love/)