

Object Alignment

Published on 08/28/2023

Concept

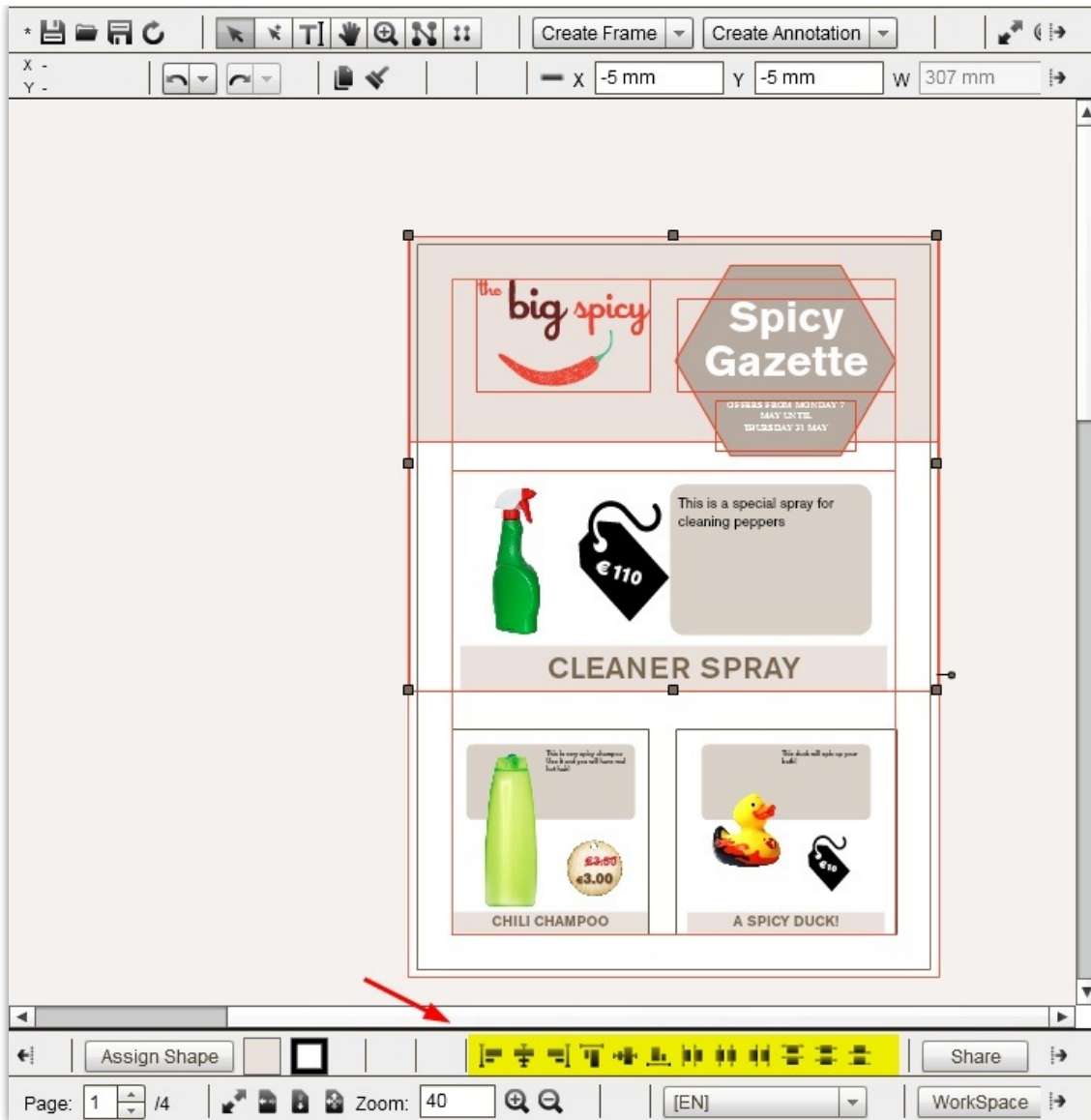
Object Alignment is a way to automatically arrange multiple objects.

Using object alignment

To access the alignment tools, first select two or more objects. Then at the bottom toolbar will appear twelve new icons, six for alignment and six for distributing. Alignment makes frames sharing the same center- or edge positions, distributing is to evenly spread out frames over the space of the multiselection. When multiple frames are selected, click an icon and the frames will be immediately arranged.

From left to right:

- Align frames left
- Align frames horizontal
- Align frames right
- Align frames top
- Align frames vertically
- Align frames bottom
- Distribute left edges
- Distribute horizontal center
- Distribute right edges
- Distribute top edges
- Distribute vertical center
- Distribute bottom edges



© 2023 Lytho, Inc. All rights reserved. | [Privacy Policy](https://www.lytho.com/privacy-policy/)
Have a friend who could benefit from Lytho? [Refer them and get a \\$200 gift card!](https://www.lytho.com/share-the-lytho-love/)